



Customer: Champlain Valley Organics LLC

Address: 1916 Smith Street  
Shoreham, VT 05770

Sample ID: Massage Oil - 200mg

Matrix: Topical

Labnumber: 2310180-05 Total mass or volume per unit (g or mL): 60

Density (g/mL): 0.9254

## Cannabinoid Profile

Test Conditions: 21°C

Extraction Technician: SH

Analytical Chemist: SH

Extraction  
Date(s)

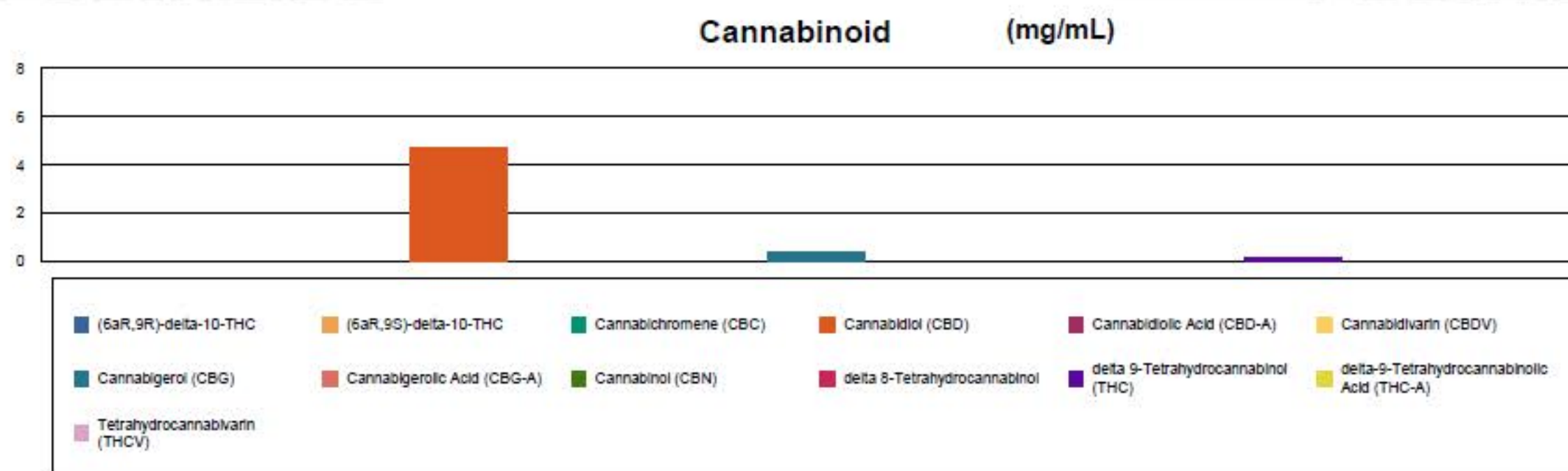
9/28/2023

Analysis  
Date(s)

9/28/2023

Test Method: Cannabinoid Potency by HPLC			Results	
	LOD (mg/mL)	%	mg/mL	mg/Bottle
Cannabidivarin (CBDV)	<0.090			
Cannabidiolic Acid (CBD-A)	<0.090			
Cannabigerolic Acid (CBG-A)	<0.090			
Cannabigerol (CBG)		0.03	0.339	20.3
Cannabidiol (CBD)		0.48	4.75	285
Tetrahydrocannabivarin (THCV)	<0.090			
Cannabinol (CBN)	<0.090			
Cannabichromene (CBC)	<0.090			
delta 9-Tetrahydrocannabinol (THC)		0.02	0.165	9.88
delta-9-Tetrahydrocannabinolic Acid (THC-A)	<0.20			
delta 8-Tetrahydrocannabinol	<0.20			
(6aR,9S)-delta-10-THC	<0.20			
(6aR,9R)-delta-10-THC	<0.20			
<b>Cannabinoids Total</b>		<b>%</b>	<b>mg/mL</b>	
Max Active THC (delta-9-tetrahydrocannabinol)		0.02	0.17	
Max Active CBD		0.48	4.75	
Total Cannabinoids		0.53	5.26	

Following USDA guidelines on uncertainty, Altitude Consulting's uncertainty is calculated to be +/- 5% for all cannabinoids using a coverage factor of 2 (95% confidence interval). Measurement uncertainty has not been factored into reported values. Blank results indicate the compound was below the limit of detection.



END OF REPORT

END OF REPORT

**Gary Brook - Laboratory Director - 9/29/2023**

Reporting Limits will vary based on sample extraction weight used for the analysis.

The results of this report are based solely on the sample submitted and cannot be reproduced. Decision Rule: Measurement uncertainty is not accounted for in the reported values.

Results are based solely on calculated numbers. Altitude Consulting makes no Statements of conformity. Pesticide, metal, and microbial analyses are subcontracted to ISO 17025 laboratories.